



A SUFFICIENT PATH TO CLIMATE-NEUTRAL TRANSPORT

Facing climate mitigation, adaptation needs and transport justice

Dr. Alexandra Millonig

Senior Scientist, AIT Austrian Institute of Technology

ECTRI Thematic Group Mobility leader



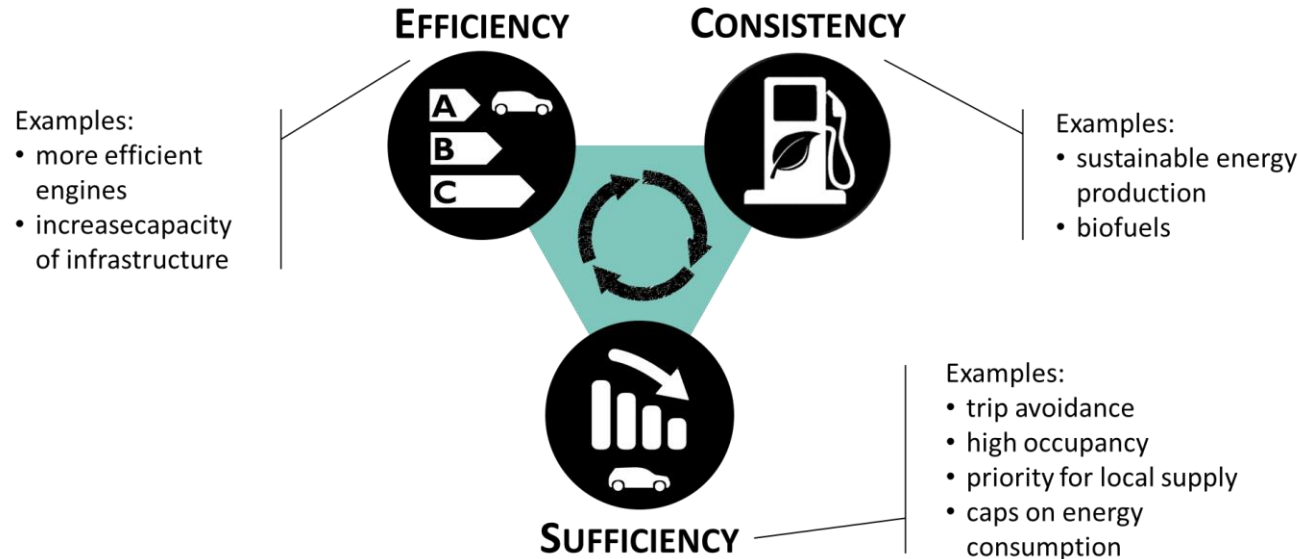
TRANSPORT CHALLENGES

So much to do, so little time...



MITIGATION STRATEGIES IN TRANSPORT

Which strategies ensure climate mitigation?
 Which measures does it need?



CLIMATE IMPACTS AND ADAPTATION NEEDS



→ Will increasing heat in cities lead to rural migration and more commuter traffic?

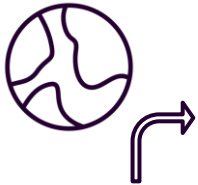
→ How will increasing cases of wildfires, flooding and land slides affect our infrastructure?



TRANSPORT JUSTICE



Generational justice



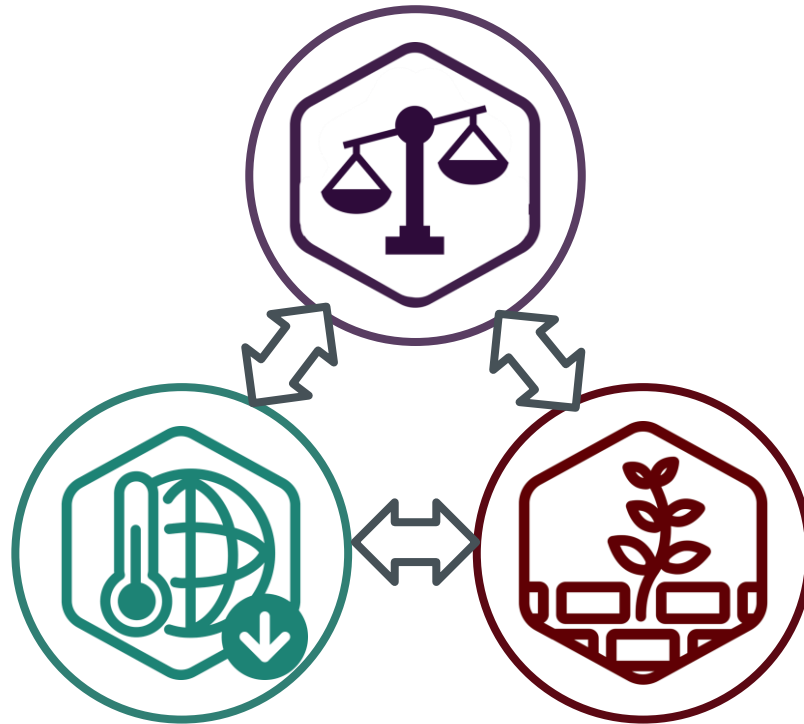
Global justice



Societal justice



... AND ALL WITHIN 15-20 YEARS?



A DIRE NEED FOR PARADIGM SHIFTS

It's not about mobility, it's about accessibility



HOW TRANSPORT NEEDS ARE UNDERSTOOD



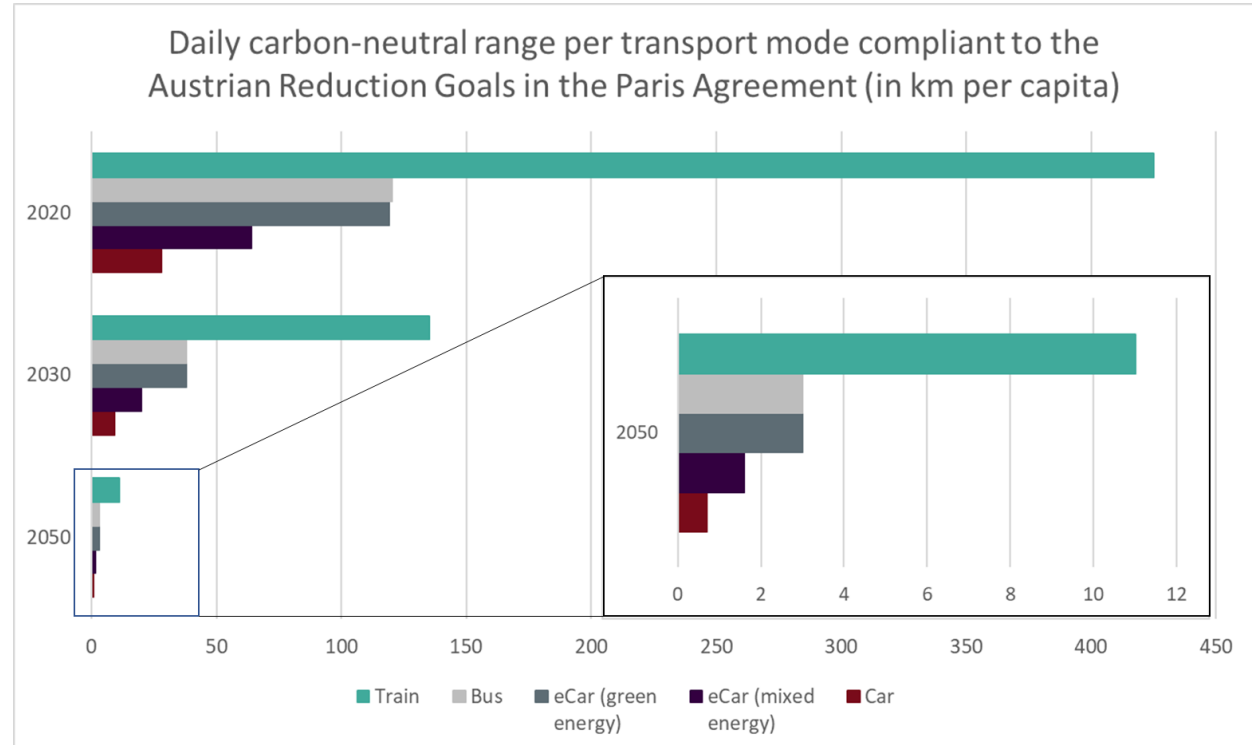
"Dieses Foto" von Unbekannter Autor ist lizenziert gemäß CC BY-ND

HOW TRANSPORT NEEDS SHOULD BE DEFINED

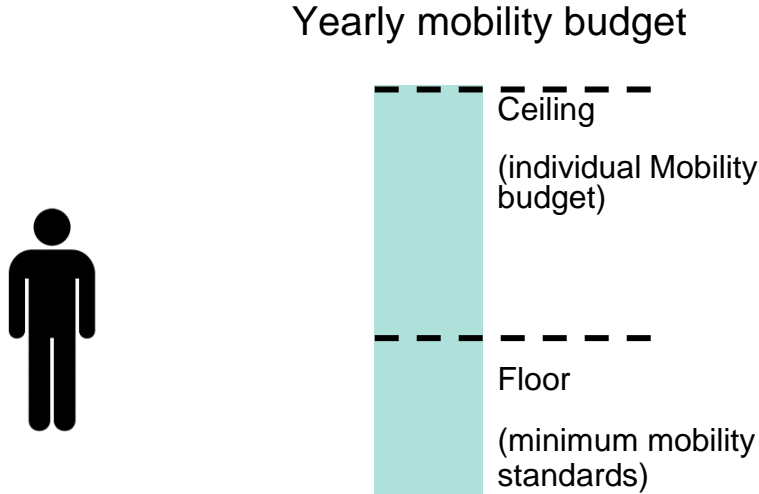


A THOUGHT EXPERIMENT...

This is how far we could only go per day with specific modes of transport if 2050 decarbonisation targets in the transport sector were mandatory tomorrow...



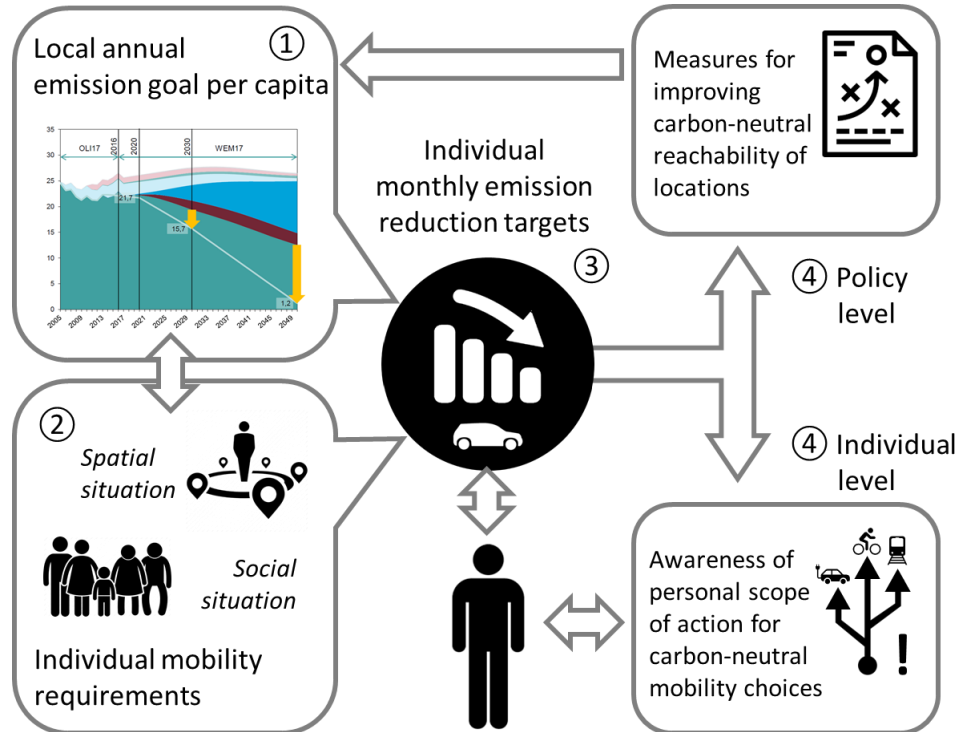
WHAT IF EACH OF US HAD A MOBILITY BUDGET



The upper limit is defined by how much transport emissions we can „afford“ per person and year

The lower limit is defined by how much emissions have to be accepted for a person to reach the nearest everyday functionalities.

FAIR INDIVIDUAL MOBILITY CARBON BUDGETS



- ① Average monthly allowance for individual mobility budgets based on local annual emission goals and population
- ② Individual spatial situation (reachability of locations, available mobility options) and social situation (responsibilities for household members, financial basis)
- ③ Provision of individual monthly emission targets (allowance in form of mobility budgets with tradable mobility permits)
- ④ Policy level:
Targeted measures to improve spatial reachability by analysing local mobility budgets
Individual level:
Achievable monthly goals and suggestions of alternatives for informed mobility choices

mobalance



NEW PRIORITIES



Location



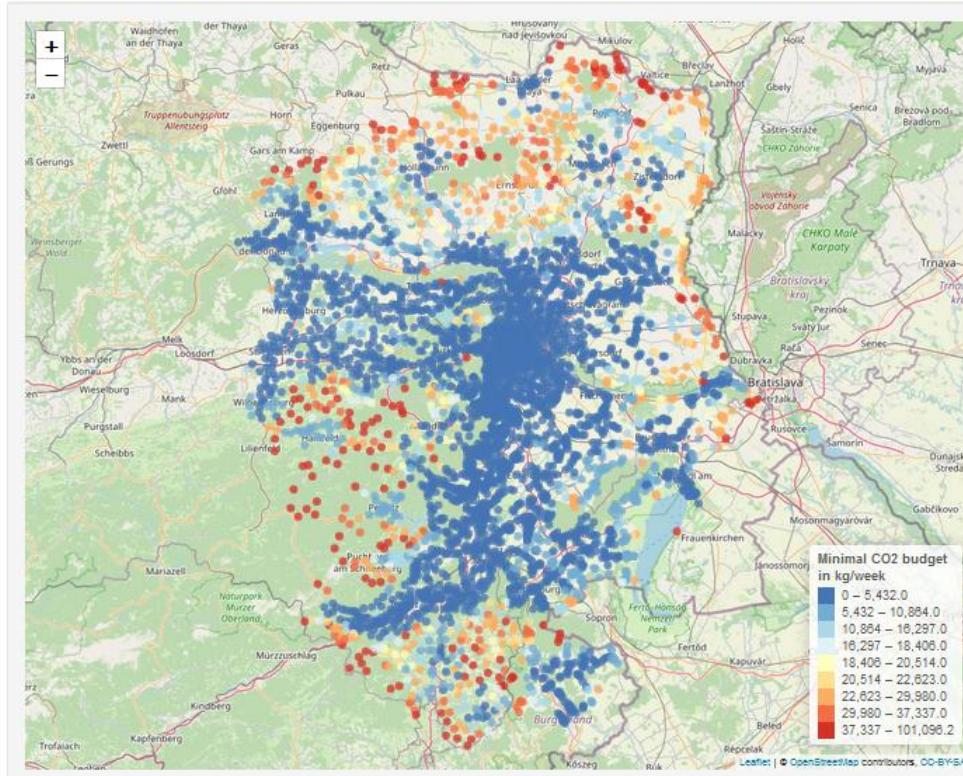
Digitalisation



Transportation

IT IS POSSIBLE!

Minimal Budget Map



Local accessibility of everyday functionalities...

- *brings transport decarbonisation targets within reach*
- *frees surfaces for nature based solutions for more resilience*
- *provides equal accessibility for people from all walks of life*

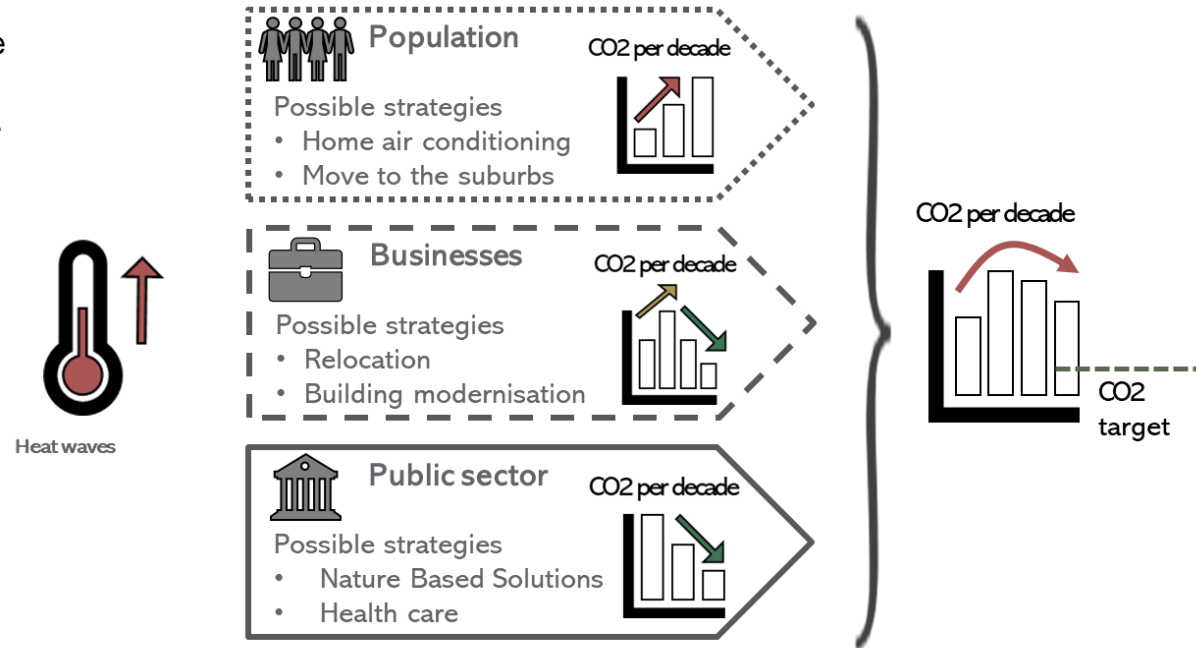
BALANCING CLIMATE ADAPTATION & MITIGATION

Looking beyond transport



COUNTING IN REBOUND & SPILLOVER EFFECTS

Adaptation strategies may be conflicting and consequently jeopardising mitigation goals.



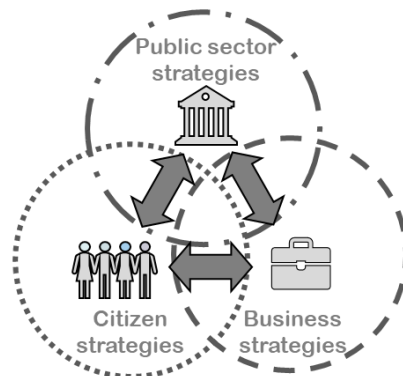
Climate Impact Contexts

Demonstrator & Follower Regions



Framework for modelling impact interrelations

Adaptation strategies



Assessing combinations of measures

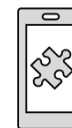
Climate Mitigation Pathways



Climate Activation & Empowerment Services



Climate literacy



Playful trainings



Decision support

KNOWING follows a three-pillar strategy for assuring the best possible transfer of knowledge and tools to public authorities, stakeholders, initiatives and the general public by increasing



Profound and comprehensive **knowledge** about quantifiable cross-sectoral interactions, complementarity and trade-offs of adaptation and mitigation measures (*“knowing what”*)

General **awareness** of this knowledge to increase the acceptance and support of measures and inspire active engagement and societal transformation (*“knowing why”*)

Tools and guidelines to apply this knowledge and accelerate the implementation of effective adaptation and mitigation plans (*“knowing how”*)

Hence, KNOWING develops the knowledge and solutions that will help...



- 1 ... **authorities** to know which measures and conditions for adaptation to set along climate mitigation pathways,
- 2 ... **businesses**, production and service providers to know how to adapt to changing conditions and climate impacts,
- 3 ... **people** to know how to adapt their lifestyles in the most sufficient way and why measures need to be set.

THANK YOU!

Dr. Alexandra Millionig

Center for Energy
Digital Resilient Cities
alexandra.millionig@ait.ac.at

